

Get ready for a career you'll love.

The CPT Program offers several opportunities within the healthcare industry, focusing on two career pipelines: advancing careers for existing healthcare workers or introducing new professionals into the field.

Eligible Job Titles

- *Licensed Practical Nurse (LPN)*
- *Associate Registered Nurse (RN)*
- *Registered Nurse to Bachelor of Science in Nursing (RN to BSN)*
- *Nurse Practitioner (NP)*
- *Physician Assistant (PA)*
- *Master of Social Work (MSW)*
- *Licensed Mental Health Counselor (LMHC)*
- *Credentialed Alcoholism and Substance Abuse Counselor (CASAC)*
- *Certified Pharmacy Technician (CPhT)*
- *Certified Medical Assistant (CMA)*
- *Respiratory Therapist (RT)*
- *Community Health Worker (CHW)*
- *Patient Care Manager/Coordinator (PCM/C)*

Please note: Some job titles listed above may no longer be eligible for the CPT Program. Please visit www.healthcareersnow.org/cpt for the most current information.

Participant Eligibility Criteria

Participants must meet the following requirements to be eligible for the CPT Program:

- United States Citizen/eligible noncitizen.
- Meet all educational or training program requirements, based on the selected CPT Program title and course of study. This may include:
 - Prior completion of educational programs, licensure, and/or certification;
 - Successful completion of academic or training pre-requisites, or entrance exams;
 - Fulfillment of any required training, volunteer, or experiential hours.
- Must be a NYS resident or resident of a bordering state (New Jersey, Connecticut, Pennsylvania, Massachusetts, and Vermont). **Please Note:** Out-of-state participants must be employed by a NYS provider to qualify for the CPT Program.
- Committed to employment at a New York State Medicaid-enrolled provider that serves at least 30 percent Medicaid members and/or uninsured individuals. These providers may include those that fall into the categories of health, behavioral health, and/or organizations that are part of established Social Care Networks.

Visit us online to get started:

healthcareersnow.org/cpt



Finger Lakes Performing Provider System (FLPPS) is a NYS-designated Workforce Investment Organization (WIO) selected by the NYS Department of Health to support regional management of the CPT Program. The FLPPS WIO is focused on strengthening the healthcare workforce through programs and services that diversify the healthcare workforce pipeline and provide opportunities for those who many not otherwise have them, while supporting the community's economic mobility.

**THE EDUCATION
IS COVERED.
THE CAREER
IS PRICELESS.**

Your path to a rewarding career in health, behavioral health, or social care.



YOUR JOURNEY IS JUST GETTING STARTED.

Get on the path to growth.

Enroll in the Career Pathways Training (CPT) Program and secure a future where your career and financial goals align. With healthcare jobs in high demand and without the weight of student debt, now is the time to take action.

The help you need for a career helping others.

Looking to begin or grow your healthcare career? The CPT Program offers education and training opportunities without financial burden.

We are committed to your success. Our team is dedicated to supporting you throughout your training and beyond.



Program details

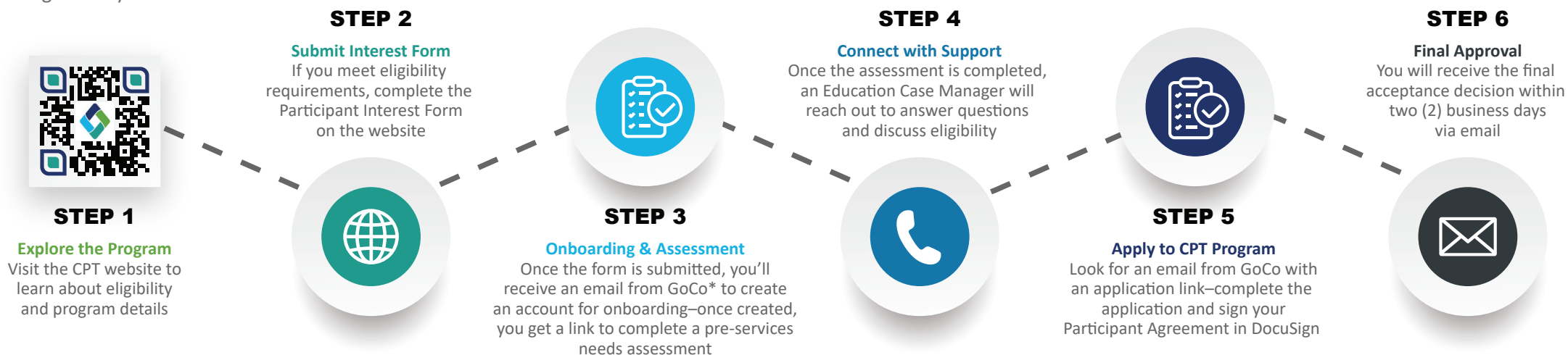
- Funding is available to pay for tuition after free federal and state aid is applied. It also covers textbooks, supplies, and other fees
- 13 eligible job titles in health, behavioral health, or social care
- Three-year commitment of service with a NYS provider that serves at least 30% Medicaid members and/or uninsured
- Participants must apply for and accept FAFSA and TAP, if applicable
- Educational program must be completed by March 2027
- Participants may only attend schools participating in the CPT Program

All CPT Program participants receive

- Tuition coverage after all free financial aid is applied
- Coverage for textbooks, supplies, and other fees
- Application and enrollment assistance
- Educational case management and tutoring services
- Apprenticeship and mentorship opportunities
- Employment readiness and job placement support

QUESTIONS?

We've got answers! Review the Program FAQ on our website.



*GoCo is the data platform that is being utilized for the CPT Program.